

RJW Machinery: Cylinder Ride on Mower Guide

When choosing a cylinder ride on mower it is important to select the most suitable machine for your requirements. RJW has therefore provided a buyers' guide to help with your decision.

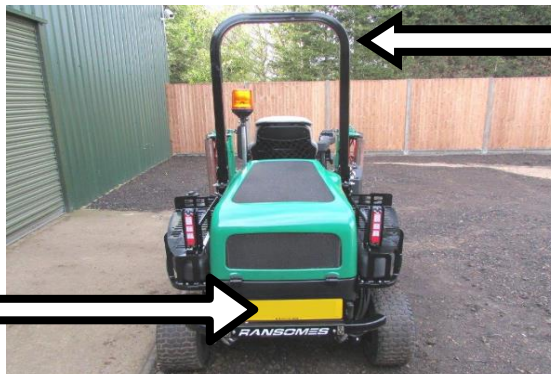
Road registration: Commercial machinery used throughout the year often requires road registration, complete with requisite road lighting kit applications. Whilst mowers for private use are less likely to require road registration and road lighting kits, you may like to consider them as an option.

Fuel; petrol or diesel? Petrol mowers are often less expensive to buy but more costly to run and are widely available in the domestic market. Conversely, diesel mowers are more expensive to buy but less costly to run and are widely available in the commercial market.



Floating cutting units: Available in 8" and 10" options and offered with 6-10 bladed cylinders, floating cutting units come fitted with both front and rear rollers to achieve a finer finish. Floating units are capable of cutting uneven surfaces and achieve a finer finish than their fixed head counterparts.

Cab specification: Whilst the majority of cylinder ride on mowers are fitted with rollover protective structure (ROPS) as standard specification there is the option to have a cab fitted. The addition of a cab is often beneficial if the machine is required throughout the year.



Rollover protective structure (ROPS): Health and safety is paramount, not least when operating plant and groundcare machinery, and so all cylinder ride on mowers used in commercial environments should come fitted with ROPS to increase operator safety.

Engine and transmission: Cylinder ride on mowers differ in HP capacity so as to achieve a variety of output requirements. Most cylinder mowers are fitted with hydrostatic transmission (HST) for a more user-friendly drive, whilst some are available with manual transmission if preferred.



Fixed cutting units: Available in 8" and 10" options and offered with 4-8 bladed cylinders, fixed cutting units come fitted with a standard rear roller. Fixed cutting units are standard specification for cylinder ride on mowers and are better suited to flatter cutting surfaces.



Landscape: Cylinder ride on mowers, available in both triple and five unit options, are well suited to large, premium cutting environments, and can be dependable cutting machines, specifically if servicing, blade maintenance and alignment is upheld.